



Releases

August 2011

www.ZENSA.com.br

Latest ZEN products:

ZEN Part Number: **1658**
STARTER DRIVE

Application



Scania

P 230, P 310, P 380, P 380, P 480, P 420, P 470 | R 420, R 470 | T 340, T 420, T 470
Uses ZEN pinion **12839**

Equivalent & Original Products

Bosch: 0001241001, 0001241003, 0001241004, 0001241005,
0001241006, 0001241007, 0001241009, 0001241014, 0001241015,
0001241016, 0001241019, 0001241020, 0001241021, 0001241023



ZEN Part Number: **1661**
STARTER DRIVE

Application



Volvo

FM / FH

Motor

Mitsubishi: M009T62571



ZEN Part Number: **5524**
CLUTCH PULLEY

Application



Ford

Focus 2.0L, 2.3L W/MT 2005/2006

Equivalent & Original Products

IKA: 35354, F235931, F23593102, 535010010,
Visteon: VP6S4U10A352AA



ZEN Part Number: **12900**
TIMING BELT TENSIONER

Application

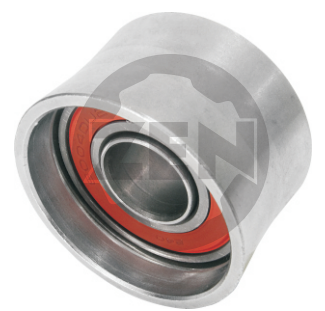


Ford

Escort / Escort SW 1.8 16v Zetec 1997/2002
Mondeo 1.8 / 2.0 16v Zetec 1993/1998
Focus 2.0 16v Zetec

Equivalent & Original Products

Dayco: DYT277, **Ford:** 928M6M250DC, **INA:** F140223, **Nytron:** 1259,
Ranalle: R4250, **SKF:** VKM24211H, **Vetor:** VTO7093



Part numbers and names shown as reference only

For more information consult our **Online Catalog:** www.ZENSA.com.br

Please contact us at:

William Avancini: zen.william@ontinsa.com

Tom Roman: zen.tom@ontinsa.com



ZEN Part Number: **12902**
TIMING BELT TENSIONER

Application



Renault

Megane / Scenic 2.0 8V 1997/2001
R19 1.8 8V 1993/1998

Equivalent & Original Products

Dayco: DYT332, **Nytron:** 7765, **Renault:** 7700726440, 7700866043,
7701468167, **SKF:** VKM 4803, **Vetor:** VTO8092



ZEN Part Number: **12904**
ACCESSORY BELT DRIVE TENSIONER

Application



Citroën

Berlingo Break (M59), 2.0 HDi 4x4 90cv, 2.0 HDi 90cv / (M49) / (M59)
C4, 2.0 HDi 16V 140 cv / C5, 2.0 HDi 107cv, 2.0 HDi 110cv, 2.0 HDi 110cv BA
Fourgon 90cv Utilitario, 2.0 HDi Fourgon 90cv, 2.0 HDi Plancher cabine 90cv
Jumpy 2.0 HDi Combi court 95cv / Jumpy 2.0 HDi Fourgon 110cv Utilitario
Xantia II (X1), 2.0 HDi 109cv, 2.0 HDi 90cv / Xantia II Break (X1), 2.0 HDi
109cv, 2.0 HDi 90cv, 2.0 HDi Entreprise 90cv Utilitario
Xsara Berline Phase 2, 2.0 HDi 109cv, 2.0 HDi 109cv BA, 2.0 HDi 90cv
Xsara (N0), 2.0 HDi 90cv

Fiat

Scudo Combinato (220P) / Scudo Karoserie (220L)
Ulysse (220)

Lancia

Zeta (220) 2.0 JTD

Peugeot

EXPERT Karoserie (222) / EXPERT (224)
PARTNER Combispace (5F)
206 Sikma zadni cast (2A/C)
306 Break (7E, N3, N5) / 306 Sikma zadni cast (7A, 7C, N3, N5) / 306 (7B, N3,
N5)
307 Break (3E) / 307 SW (3H) / 307 (3A/C)
406 Break (8E/F) / 406 (8B)
806 (221)
RANCH karoserie (5)
206 SW (2E/K)

Renault

CLIO I 1.9D / CLIO 2.0 16V SPORT
ESPACE III 2.0 16V ESPACE III 19 dTi
LAGUNA I 1.9 dTi
MEGANE I CABRIOLET-COUPÉ / MEGANE I CLASSIC-BREAK / MEGANE I 2.0
16V / 1.9D/1.9 dTi / MEGANE SCENIC I
TRAFICI 1.9D I

Volvo

S40-V40 1.9TD

Equivalent & Original Products

Citroën: 5751.57, 5751.96, **Fiat:** 9633315280, 9642965780, **INA:** F1225307,
F12253012, F123618, **Lancia:** 9633315280, 9642965780, **Renault:**
MW30621270, 0000575157, 30621270, 30813134, 8200065479, 963315280,
96333152, 96429657, **SKF:** VKM36016



Part numbers and names shown as reference only

For more information consult our **Online Catalog:** www.ZENSA.com.br



Please contact us at:

William Avancini: zen.william@ontinsa.com

Tom Roman: zen.tom@ontinsa.com