



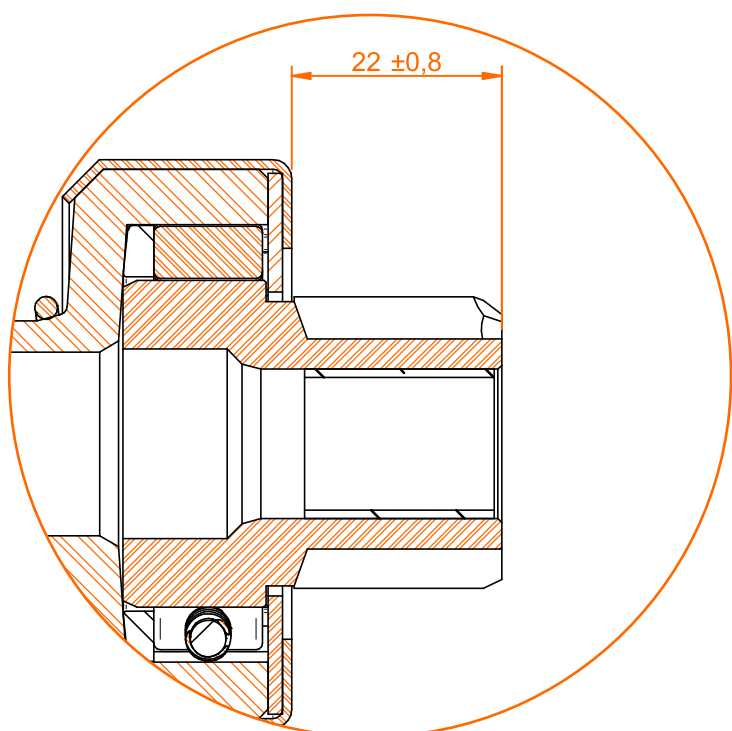
ZEN TECHNICAL TIP #41

DIFFERENCE BETWEEN STARTER DRIVES 0629 AND 1194



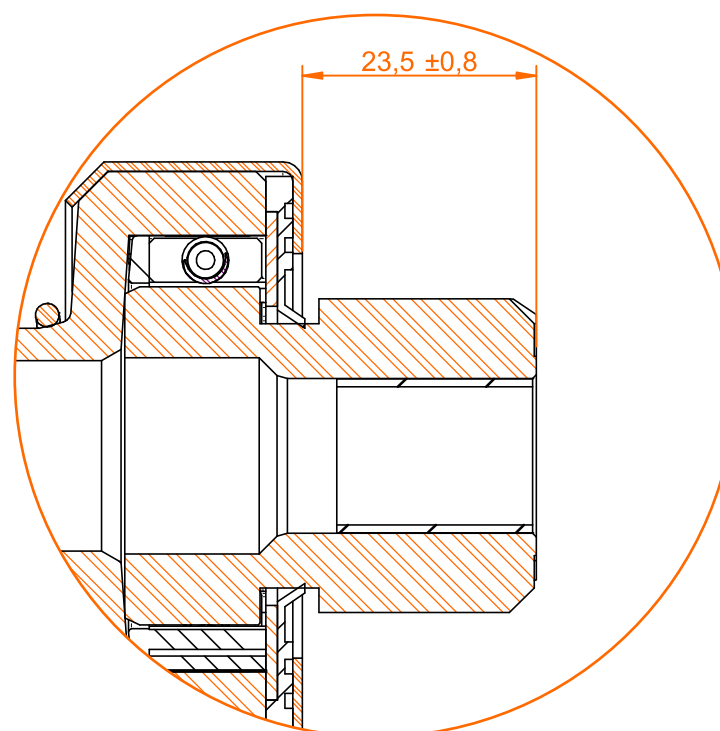
The 0629 and 1194 starter drives are physically similar and their main measurements are identical but not interchangeable. Look at their differences:

0629



The 0629 has a lower gearing height (22 ± 0.8)

1194



The 1194 has a higher gearing height (23.5 ± 0.8) and uses a rubber seal to prevent external contaminants (oil/dust/water/etc) from damaging the starter drive's internal system.

WHAT HAPPENS IF YOU SWAP ONE FOR THE OTHER?

- Using 0629 instead of 1194 – the starter drive will lose its function quickly due to contamination. In addition, the cover may touch the flywheel causing wear and breaking.
- Using 1194 instead of 0629 - there will be no problem.